

FIRECHIEF LITH-EX EXTINGUISHERS

FIRECHIEF[®]
making the world a safer place

MODEL:

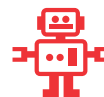
FLE1
FLE2
FLE6
FLE9



- Designed for use on Lithium-ion battery fires
- Kitemark approved (Models FLE2, FLE6, FLE9)
- Can extinguish Lithium-ion battery fires, uncontrollable by other extinguisher types
- Quickly cools and prevents excessive heat, forming a thermal barrier to stop fire propagation
- Easy to store
- Non-toxic
- Environmentally friendly
- Ideal for use on mobile phones, laptops, tablets, power tools, toys, electric scooters and e-bikes
- 5 year guarantee



KM 614276
BS EN 3



+44 (0) 330 999 0019



sales@firechiefglobal.com



firechiefglobal.com

FIRECHIEF LITH-EX EXTINGUISHERS

FIRECHIEF®
making the world a safer place

A lithium-ion battery fire may result from physical damage that causes a short circuit, overcharging or by increased external temperature.

Firechief Lith-Ex is the world's first fire extinguisher designed to tackle Lithium-ion battery fires in mobile phones, tablets, laptops, toys, power tools and electric scooters.

MODEL:
FLE1
FLE2
FLE6
FLE9



Specifications

Model	FLE1	FLE2	FLE6	FLE9
Product Code	100-1576	100-1577	100-1578	100-1579
Description	Firechief 1L Lith-Ex Extinguisher	Firechief 2L Lith-Ex Extinguisher	Firechief 6L Lith-Ex Extinguisher	Firechief 9L Lith-Ex Extinguisher
Battery Capability Suitability (Wh)*	60-100	100-250	250-500	500-750
Capacity (ltr)	1	2	6	9
Fire Rating	3A	5A	13A	13A
MED Approval	N/A	YES	YES	YES
Throw Range (m)	1.5 - 2.0	1.5 - 2.0	1.5 - 2.0	1.5 - 2.0
Discharge Time (secs)	25	50	120	180
Working Pressure (bar)	15	15	15	15
Temperature Range (°C)	+5/+60	+5/+60	+5/+60	+5/+60
Product Height (mm)	350	410	530	672
Product Diameter (mm)	85	110	170	170
Filled Weight (kg)**	2.1	3.9	10.7	15.0
Carton Height (mm)	360	420	525	670
Carton Length (mm)	102	125	197	199
Carton Width (mm)	104	128	267	226
Packaged Weight (kg)***	2.5	4.0	12.0	16.0
Product EAN	5055377960544	5055377960551	5055377960568	5055377960575

* Guide only.

** Extinguisher, contents and plastic base only (where applicable) - not including hose, bracket or packaging.

*** Includes all packaging, hose / horn and bracket.

For more information contact: Firechief Global, 3 Lands End Way, Oakham, Rutland, UK, LE15 6RB | Imported into EU by: Sentura Group (Ireland) Ltd, Joyce House, 21-23 Holles Street, Dublin 2, Ireland

+44 (0) 330 999 0019

sales@firechiefglobal.com

firechiefglobal.com