

Lexicomm 228N

Quick Start Guide



The LX228N master station is a ready out of the box EVC system suitable for standalone and small 2 panel network applications up to 8 lines. It is very simple to install, requiring no set up or software, and is compatible with Vox Ignis range of Type A, Type B, Type C outstations and the Assist Call range of emergency assistance alarms.

This guide summarises applicable information from the full manual, which is available by scanning this QR code.

LX228 Repeater Network Schematic

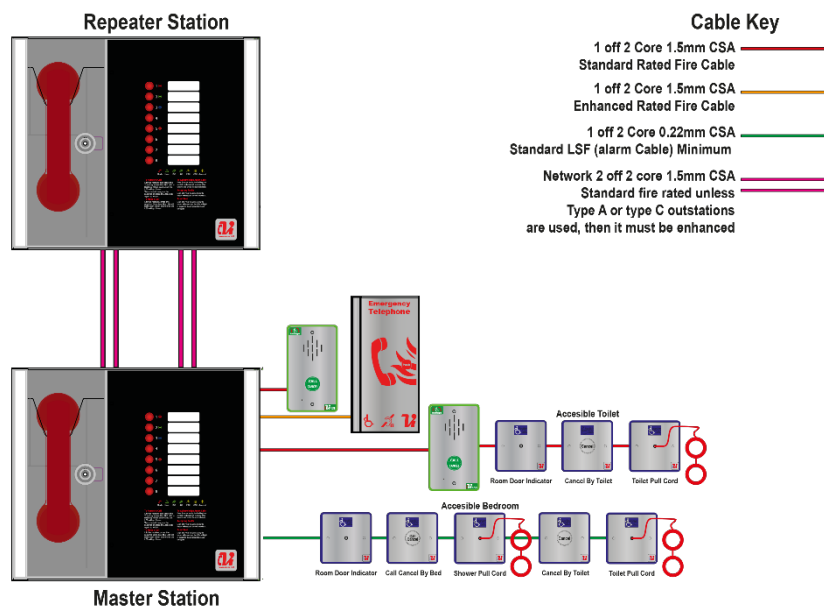


Figure 1

1. Mounting Information

Master stations should be mounted in fire control rooms or next to the fire alarm panel at a mounting height of between 1.4 and 1.5m above finished floor level to the centre of the controls. Type A outstations (fire telephone) are generally fitted in fire-fighting lobbies and fire and rescues access points at 1.3 to 1.4m above (FFL). Type B outstations are used in disabled refuges at a mounting height of 0.9m to 1.2m (FFL). For Emergency assistance alarms see ViLX-ACA datasheet.

2. Cable Information

Fire telephone systems utilise Type A outstations and must use enhanced grade fire resistant cabling throughout for all wiring, including the mains supply to the master station. Max distance using 1mm or 1.5mm cable is 500m from outstation to master station.

Disabled Refuge systems utilise Type B outstations, they are wired in standard or enhanced grade fire resistant cabling Refer to BS 5839-9:2021 for full details.

Max distance using 1mm or 1.5mm cable is 500m from outstation to master station.

Network/Repeater systems are wired in standard or enhanced grade fire resistant cabling, 2 x 2 core loops 1mm or 1.5mm (2c Data, 2c Audio) Refer to BS 5839-9:2021 for full details.

Emergency assistance alarms (Assist Call) for dedicated circuits use 1mm 2 core flex for lengths of 500m from the master or security cable for shorter lengths from up to 50m for 2 cores up to 200m if 4 cores are twisted together. If sharing with a Type B use the same grade of fire-resistant cable.

3. Important Safety Information

This Equipment must only be installed and maintained by a suitably skilled and competent person. This Equipment is defined as Class 1 in EN IEC62368-1:2020+A11:2020 (Low Voltage Directive) and must be EARTHED.



Caution



Indoor Use Only



Warning	Shock Hazard- Isolate Before Opening
Warning	TO REDUCE THE RISK OF FIRE OR ELECTRIC SHOCK, DO NOT EXPOSE THIS UNIT TO RAIN OR MOISTURE
Warning	THIS UNIT MUST BE EARTHED
Warning	NO USER SERVICEABLE PARTS

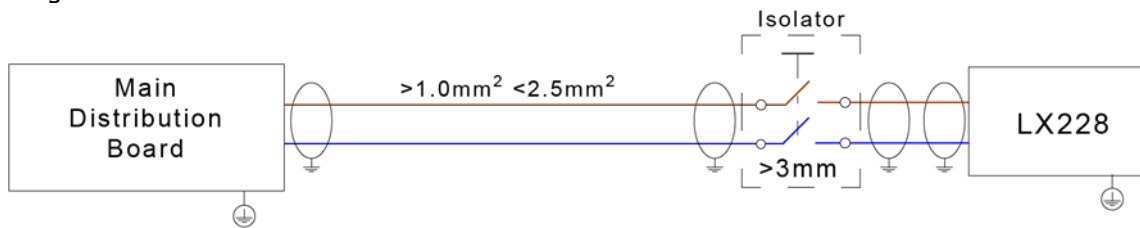


Figure 2

Each ViLX-228N Master Station requires local isolation with verification as per the Electricity at Work Regulations 1989, returning to a B6A breaker clearly marked "**EMERGENCY VOICE COMMUNICATION SYSTEM. DO NOT TURN OFF**".



Anti-static handling guidelines

Make sure that electrostatic handling precautions are taken immediately before handling PCBs and other static sensitive components.

Before handling any static-sensitive items, operators should get rid of any electrostatic charge by touching a sound safety earth. Always handle PCBs by their sides and avoid touching any components.

4. Battery Information

In the event of mains failure BS 5839-9:2021 requires battery backup for 24 hours standby and 3 hours operation thereafter.



Safety Information:

Sealed Lead Acid batteries contain sulphuric acid which can cause burns if exposed to the skin. The low internal resistance of these batteries mean large currents will flow if they are accidentally short-circuited causing burns and a risk of fire.

Exercise caution when handling batteries.

Power Up Procedure:

Always apply mains power before connecting batteries.

When connecting batteries, always connect the Positive (Red +) terminal first.

Power Down Procedure:

Disconnect the batteries before removing the mains power.

When disconnecting batteries, always remove the Negative (Black -) terminal first.

Battery leads should be removed by grasping the plastic battery spade connector covers not the red and black wires as this can cause premature failure of the lead.

A ViLX-228N Master Station requires **one number** 12V 7AH valve regulated sealed lead acid battery. The battery is not supplied with the ViLX-228N Master Station. Vox Ignis recommend a Yuasa NP7-12.

5. Installation

Use the 2.5mm AF Hex Key supplied to open the right-hand front cover.

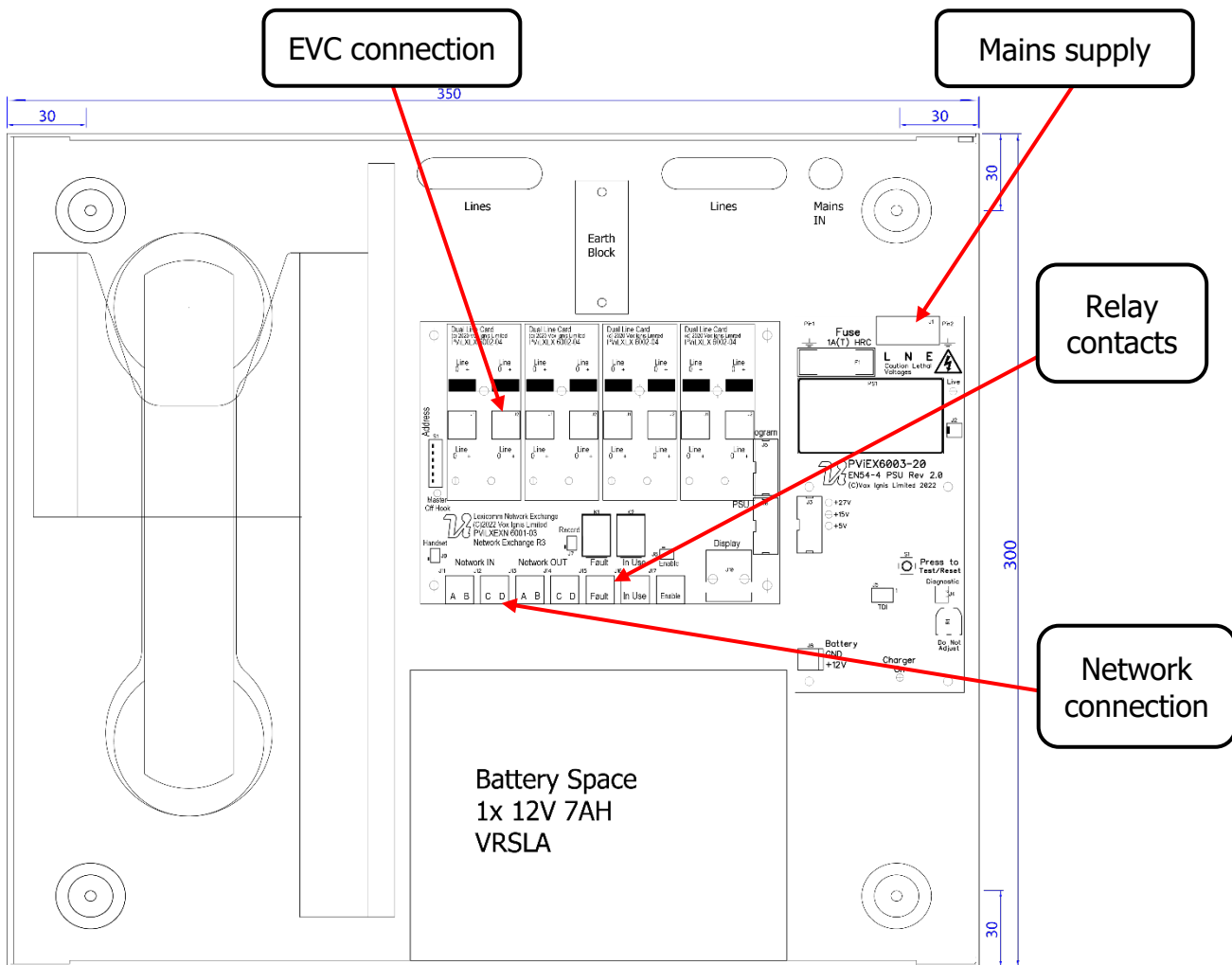


Figure 3

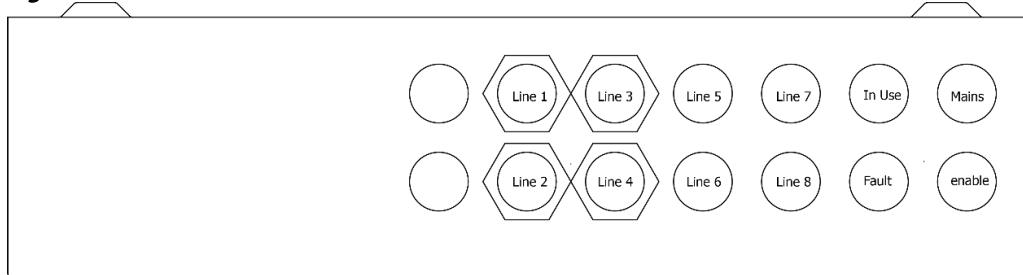


Figure 4

Unused knockouts must be left unopened to comply with the Low Voltage Directive. Accidentally knocked out holes should be blanked off.

The ViLX-228N Master Station weighs 6kg with batteries, so care should be taken to securely mount the Station on stud walling.

5.1 Repeater/Network Wiring

The LX228N master station can be connected to another LX228N master station to form a small network, maximum of 2x panels using a maximum of 8 lines, split 8/0, 4/4 or 6/2 across the 2x panels.

LX228 Network Schematic

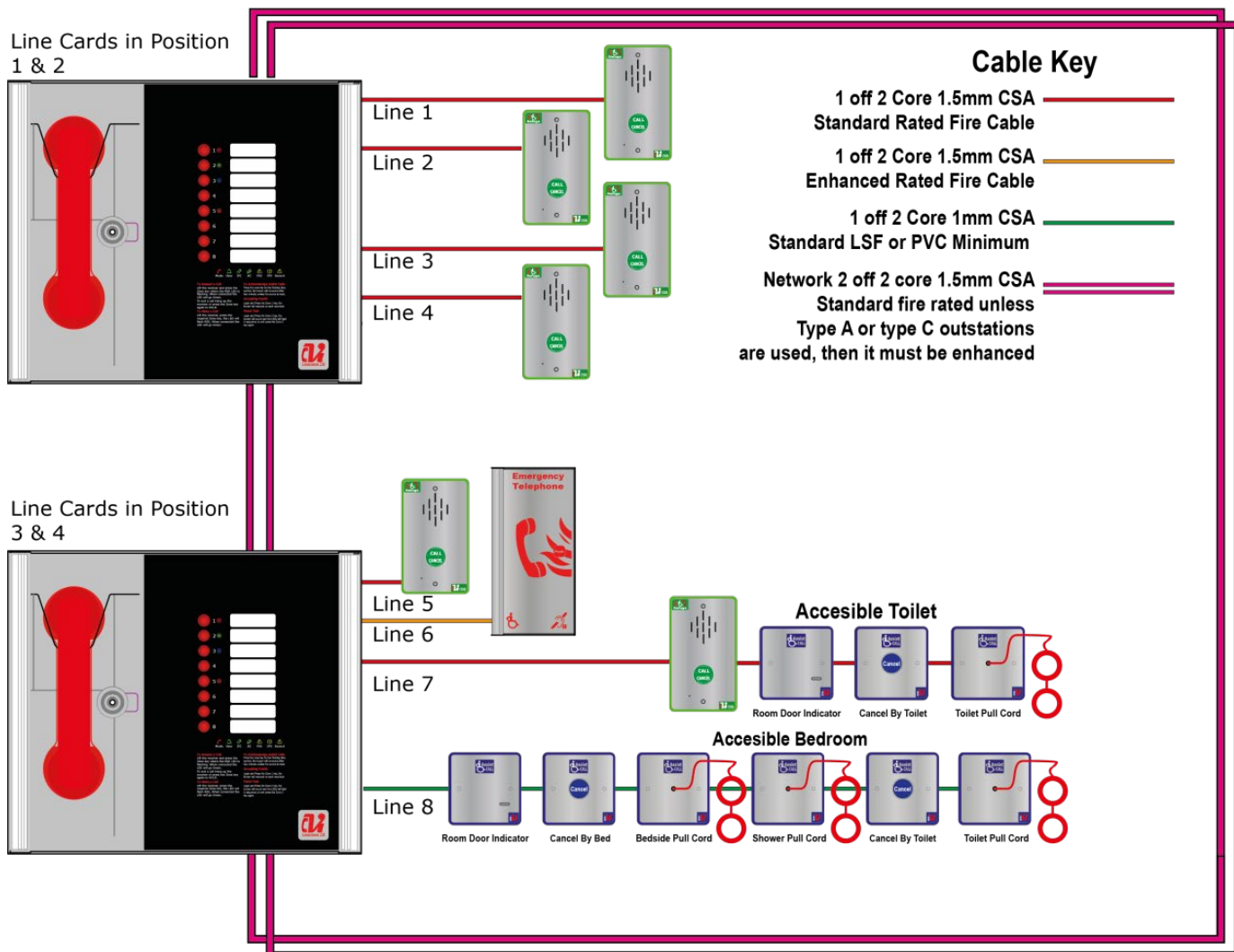


Figure 5

Or it can be connected to an LX228N-0 Repeater station. The number of cables and method is the same. See Figure 6. The default network address for the 2x panels is 1, they **must** share the same network address in this example.

A LX228N master station can also form part of a Lexicomm Network system, please see the full manual for details of wiring etc.

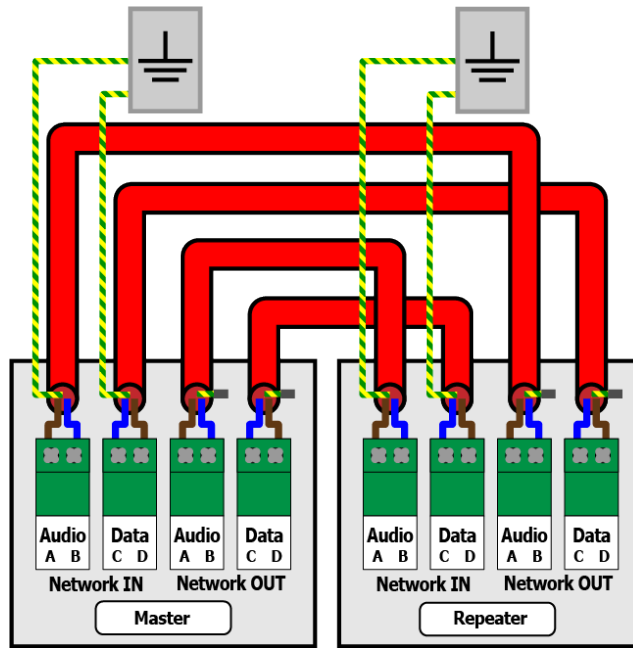


Figure 6



Note: Only connect the earth screens on the Net in cables, cut back and insulate Net OUT earth screens, as shown below.

5.2 Display PCB Dipswitch Settings

The ViLX-228N Master Station has various site configurations which are configured using the dipswitch located on the rear of the Display PCB.

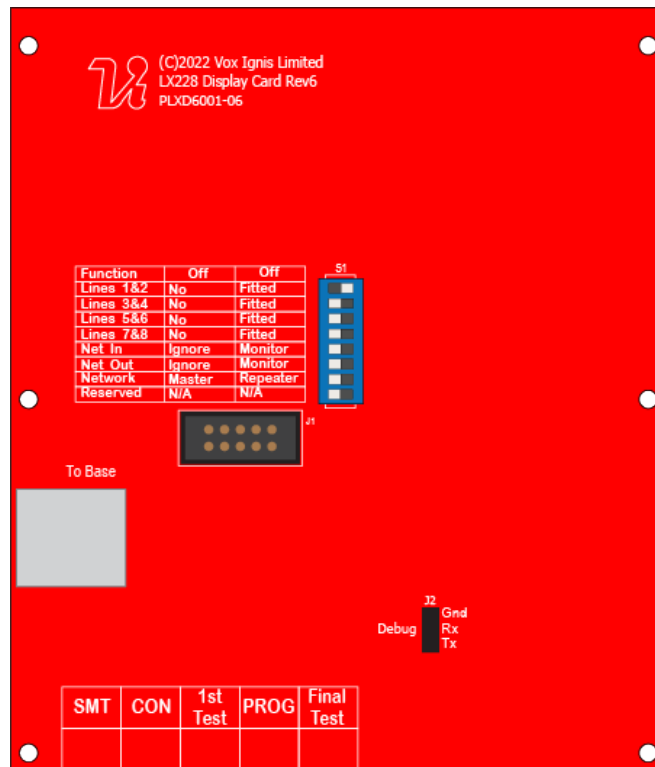


Figure 7

5.3 ViLX-228 Master Station Display PCB Dipswitch Settings

1	2	3	4	5	6	7	8	
Line 1&2	Line 3&4	Line 5&6	Line 7&8	Net In	Net Out	Network	Reserved	Remarks
✓								Line card 1 fitted
✓	✓							Line card 1, 2 fitted
✓	✓	✓						Line card 1, 2, 3 fitted
✓	✓	✓	✓					Line card 1, 2, 3, 4 fitted
				X	X	X		Default single Master
				✓	✓	X		Ring connected Master
				✓	✓	✓		Ring connected Repeater

Table 1

✓ = Dipswitch in ON position

x = Dipswitch in OFF position

6. Commissioning

The commissioning should be carried out by a competent person who has a basic knowledge and understanding of the design and installation sections of BS 5839-9:2021 and has access to the specification of the project.

1. All wiring should have been checked and be fault free and 10KΩ EOL resistor fitted. The mains and battery can be connected- AC, DC and Mode LEDs should be green.
2. Connect EVC/ Assist Call wiring to the Line cards.
3. Perform intelligibility tests, visit each outstation in turn press call for a Type B or lift the handset in a type A. A 2nd person is required to answer the call.
4. Where Assist Call is fitted, all pull cords in each circuit should be tested, acknowledged at the panel, cancelled at the call location. Ensure all controls and indicators operate correctly.

7. Indications and Controls


	Mode	Description
		Green solid
	Red solid	Outstation off hook
	Blue solid	Assist call active
	Yellow Solid	Refuge (type B) points disabled
	Flashing Red/Blue	Incoming call/ Assist Call alarm at same time
	Flashing Yellow	Fault on Panel

Figure 8

7.1 Receiving a call

One of the eight zone LEDs and the mode LED will flash red to indicate an incoming call.

Lift the Master handset receiver. The User LED will illuminate Red.

Press the corresponding zone button (indicated by the red flashing LED). This LED and the User LED will change to flashing green to show that this line is now connected, and a conversation can take place.

7.2 Making a call

To make a call, lift the Master handset receiver and the User LED will illuminate red.

Press the zone button for the required outstation. The corresponding zone LED will flash red.

When the outstation answers the call, the zone LED flashes green, the mode LED illuminates red and the user flashes green to indicate this line is now connected and a conversation can take place.

7.3 Ending a call

To end the call from the outstation, either replace the Type A receiver back on its hook or press the call/cancel button for a Type B outstation.

To end a conversation from the ViLX-228N Master Station, replace the Master handset receiver back on its hook.

Note: This will not end the call, only the conversation. The call MUST be ended at the outstation.

7.4 Assist Call alarms Operation

When an "Assist Call" goes into alarm, the appropriate zone LED will flash blue, and a two-tone buzzer sounds to indicate that an "Assist Call" alarm has been operated. To acknowledge the alarm, press the corresponding zone button, and the blue LED will illuminate continuously with an intermittent buzzer tone every 15 seconds. If after 2 minutes the "Assist Call" alarm has not been cancelled, the buzzer will resound, and the LED will flash blue.

7.5 Accepting Faults

To accept the fault, enter either the access level 2 (code: 1664) or access level 3 (code: 1812) menu, then press zone button 1.

7.6 Panel Indicator Test

To test the panel indicators, enter either the access level 2 (code: 1664) or access level 3 (code: 1812) menu, then press zone button 2.

All LEDs will illuminate in a predefined sequence, and the buzzer will sound.

Press zone button 8 or button 2 to stop the panel indicator test and to return to the menu options.

8. Outstation zone template

There is space to the right of each outstation zone indicator to name the location of the outstation. At the rear of the display door there is a slot located in the centre above the display PCB; the outstation zone template can be inserted here.

The template is in "Word" format and can be down loaded at www.vox-ignis.com. This can be completed, printed out and cut to size as shown below.

TAB
Refuge 1 Name Toilet 1 Name
Refuge 2 Name Toilet 2 Name
Refuge 3 Name Toilet 3 Name
Refuge 4 Name Toilet 4 Name
Refuge 5 Name Toilet 5 Name
Spare 1
Spare 2
Spare 3

The Lexicomm ViLX-228N EVCS is designed and manufactured in the UK by:
Vox Ignis Limited, Unit 27, NEBIC, Enterprise Park East, Sunderland, SR5 2TA.
www.vox-ignis.com



WEEE
Compliant
Product

All information is believed to be correct at time of printing E&OE.
Vox Ignis operate a policy of continuous improvement; always confirm specification details before purchase.
Company Registration No: 8892407 info@vox-ignis.com
Document DViLX228N1001-01

