

1 Product Overview

The Assist Call accessible bedroom kit is compatible with the Lexicomm LX228, Lexicomm Network range of disabled refuge, fire telephone systems and Assist Call standalone 4 Zone and 1 zone controllers. It is intended to provide all of the components required for a typical accessible bedroom application as recommended within Building Regulations Document M (access for the Disabled) and BS8300:2018.

2 Operation

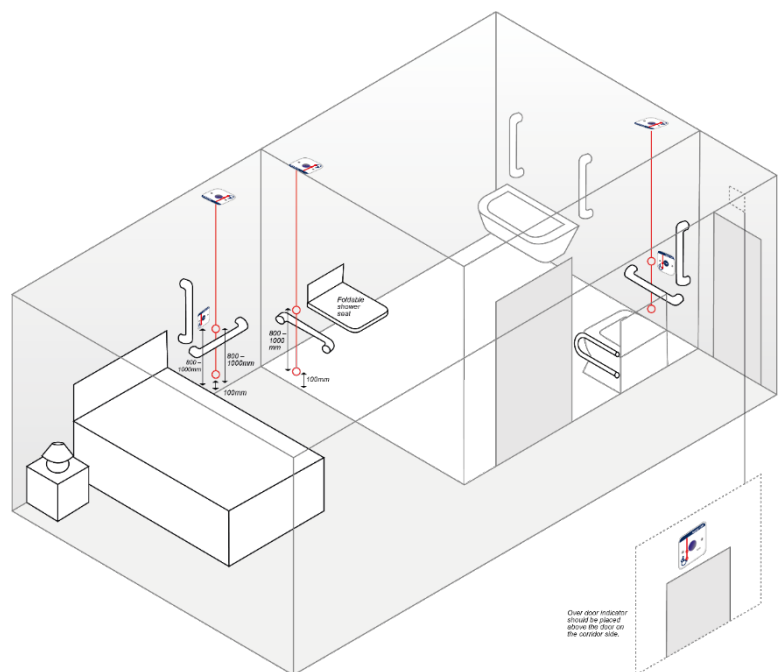
To operate, pull the cord, the blue indicator will illuminate on that pull cord, buzzers will sound and indicate with a flash on both the cancel plates and the overdoor indicator, if acknowledged the indicators will change from flashing to steady illumination. The system can only be reset by pressing one of the cancel buttons.

3 Installation

Remove the equipment from its packing, and check the contents against the following list:

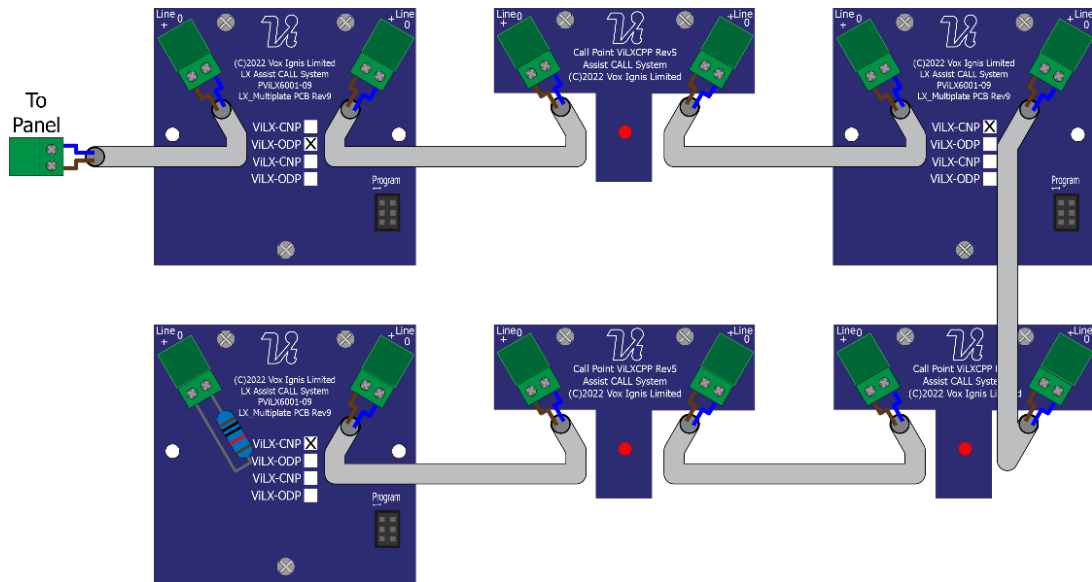
- ViAC-CPP -W Pull Cords x 3.
- ViAC-CNP-W Cancel plates x 2
- ViAC-ODP-W Over Door plates x 1
- Installation instruction sheet.
- Accessory pack with the following contents:
 - 12 no device mounting screws.
 - 1 x "Assist Call fitted" sticker
 - 2 x "Assist Call Operating Instructions"

The units should be mounted as shown in the adjacent drawing to comply with the requirements of Building Regulations document M (Access for the Disabled) and BS 8300-2, these documents should be consulted prior to installation. The pull cord should be positioned behind the handrail, level with the front of the toilet, so the bottom ring is 100mm from the floor. The cancel plate should be placed above the handrail 1000mm up on the wall side of the cubical. For the bedroom area the pull cord should be sited so that it can be operated from the bed and from an adjacent floor area. The cancel should be located so that it can be operated from the bed or wheelchair area.

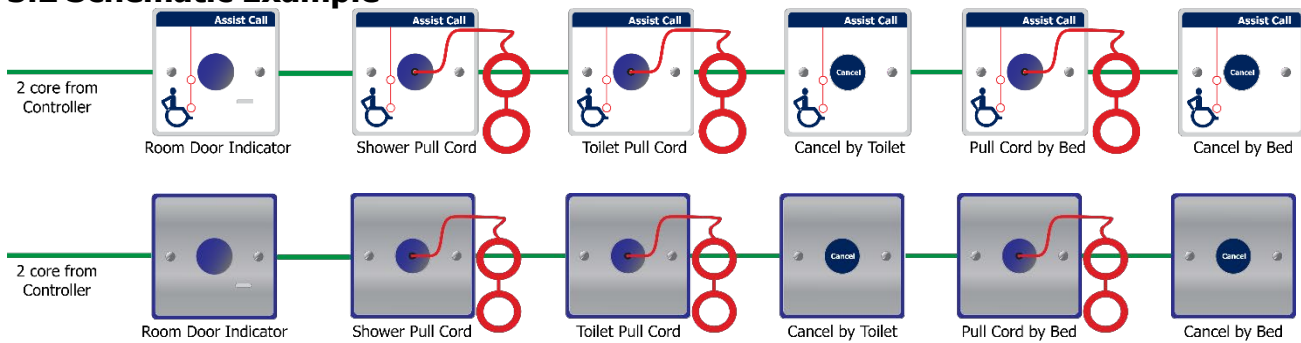


3.1 Mounting

The ViAC-ACB-W Assist Call plates mount onto a 25mm UK SINGLE gang back box. The ViAC-ACB devices are not supplied with back-boxes as they can be used with any "MK" style single back-box over 25mm deep. To accept cable glands the back-box needs to be 35mm deep including metal clad surface types and plastic plasterboard dry liner boxes. When flush mounting, use the back-box manufacturers recommended cut out.



3.2 Schematic Example



All system wiring should be installed to meet the appropriate parts of BS 7671 (Wiring Regulations). Other national standards of installation should be adhered to where applicable.

Extra Low Voltage (ELV) Wiring: Always segregate low voltage wiring from the mains wiring.

4 Technical Specification

Physical

	-W	-SS
Height	86mm	
Width	86mm	
Visible Depth	12mm	
Total Weight	360g	592g
Material	White Polycarbonate	Blue Polycarbonate & Stainless Steel

Recommended Cables

Cable Type	LSF flex, T+E	Cat5/6, Security
Size	1mm	0.22mm
Distance from controller	500m	1 pair 50m 2 pairs 100m

This product is designed and manufactured in the UK by:
Vox Ignis Limited, Unit 27, NEBIC, Enterprise Park East, Sunderland, SR5 2TA.

www.vox-ignis.com
info@vox-ignis.com



WEEE
Compliant
Product

All information is believed to be correct at time of printing E&OE.
Vox Ignis operate a policy of continuous improvement; always confirm specification details before purchase.
Company Registration No: 8892407 info@vox-ignis.com
Document DVIACACB1003-01

