

R100

Addressable Sounder & Sounder Beacon Range



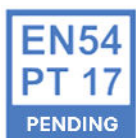
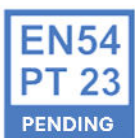
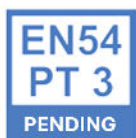
8 Selectable VAD Settings

16 Selectable Alarm Tones

Built-In Short Circuit Isolator

Adjustable Sounder SPL Settings

Type B (Indoor) & Type A (Outdoor) options



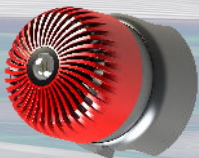
Introducing the exciting new line of addressable audio / visual devices from Zeta Alarms, the R100 operates on low power consumption but it comfortably packs a punch, generating high volume and brightness output levels (selectable for choice).

The R100 is softly styled, versatile and compact, it comes supplied with an indoor mounting box backbox and can be upgraded to a weatherproof solution when using the outdoor backbox (R100-SM/WP) which is available as an additional add-on

For the benefits of installation the R100 comes equipped with a pluggable terminal connector for ease, allowing quick and simple connection during the second fix phase.



R100 with R100-SM/WP
Outdoor Back box



Addressable Sounder & Sounder Beacon Range

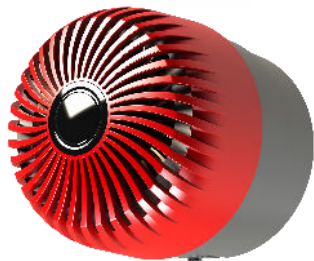


Model Numbers

R100-SA Sounder with SCI

R100-SBA Sounder Beacon with SCI

R100-SM/WP Outdoor Back Box Assembly



Technical Specifications

| Model | R100-SA Sounder | R100-SBA Sounder / Beacon |
|----------------------------|---|---------------------------|
| Part Number | 42-640 | 42-641 |
| Housing Colour | Red & Grey | |
| Beacon Flash Colour | N/A | White |
| Beacon Flash Rate | N/A | 0.5Hz |
| Beacon Flash Coverage | N/A | W-3.5-6.1 (Max) |
| Number of VAD Settings | N/A | 7 (+ off) |
| Sounder Output (Anechoic) | 100dB +/- 3dB | |
| Sounder Tones | 16 | |
| Sounder Volumes | 4 - Off, Low, Medium, High | |
| Voltage | 17-28V DC | |
| Quiescent Current | 700µA (0.7mA) | |
| *Alarm Current | 2.6mA-5.5mA | 5.5mA-36mA |
| Sounder Type | Type A (indoor) Type B (outdoor) with R100-SM/WP | |
| IP Rating | IP21C (indoor) IP33C (outdoor) with R100-SM/WP | |
| Operating Temperature | -25°C to 70°C | |
| Max Humidity | 95% RH Non-Condensing | |
| Indoor Size (HxWxD in mm) | 100x100x103 | 100x100x106 |
| Outdoor Size (HxWxD in mm) | 120x120x118 | 120x120x124 |
| Weight | 305g | 320g |

Features:

- Complies with EN54 Part 3 Type A and B (Certification Pending)
- Complies with EN54 Part 17 (Certification Pending)
- Complies with EN54 23 (Strobe) (Certification Pending)
- 16 Selectable Tone Patterns
- 4 Selectable Sounder Volumes
- 8 Selectable VAD Setting
- Surface Mount Only - Indoor (shallow) & Outdoor
- Housed in UL V0 Flame Retardant ABS

Protocol: Both the R100-SA Sounder & R100-SBA sounder / sounder beacon works on the Zeta Fyreye II protocol only.

Back Boxes: The R100 range has two available back boxes, the standard shallow back box, suitable for indoor use only, with rear wiring entry (supplied with product as standard).

The R100-SM/WP back box is suitable for outdoor use and has 2 x threaded 20mm cable entry points.

Connections: The R100-SA / R100-SBA have a 4 way pluggable connector block and earthing point for its loop connection, perfect for the first fix.

Flasher Coverage: The R100-SBA addressable sounder / beacon has selectable beacon settings. The coverage for each setting is found in the table below.

VAD Coverage

| Setting | Coverage (W-z-x) | Alarm Current* |
|---------|------------------|----------------|
| 7 | W-3.5-6.1 | 36mA |
| 6 | W-3.2-5.7 | 31mA |
| 5 | W-3.0-5.2 | 26mA |
| 4 | W-2.6-4.6 | 20mA |
| 3 | W-2.7-4.7 | 21mA |
| 2 | W-4.2-2.7 | 16mA |
| 1 | W-3.1-2.0 | 11mA |
| 0 | OFF | 5.5mA |

*Sounder on Max Setting
Refer to Room Layout Drawing

Room Layout Drawing

