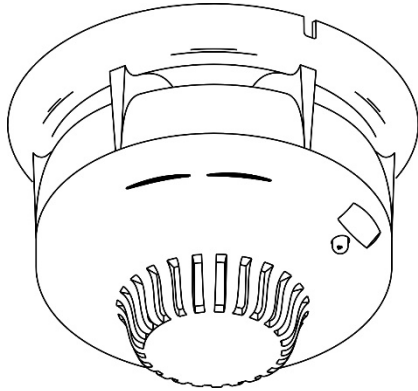


ZP755BV-4P Addressable Base Sounder with Visual Indicator Installation Sheet



Description

The ZP755BV-4P is an addressable sounder with visual indicator designed for use in Ziton addressable fire detection and alarm systems.

The unit includes DIP switches for setting the address, operating mode, volume, and tone, and two jumpers to set the power source (loop or external 24 VDC supply).

Caution: The visual indicator does not comply with EN 54-23 and must not be used in fire alarm installations where fire notification beacons are required.

Table 1: Models

Model	Description
ZP755BV-4P	Addressable detector base sounder with visual indicator, polar white
ZP755-COV-P	Cover, polar white
SPB-2P	Plug-in base, polar white

Installation

To install the device:

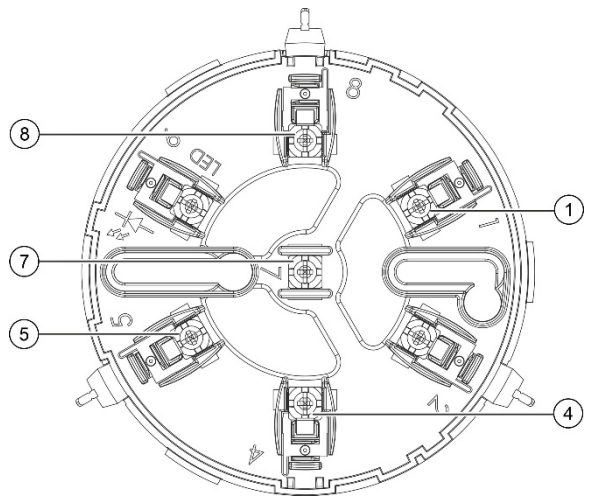
1. Wire the base
2. Set the power source (loop or external)
3. Set the address
4. Set the operating and visual indicator modes
5. Set the volume
6. Set the tone
7. Mount the sounder onto the base

The details of each step are given below.

Wiring the base

Wire the base (not supplied) as shown in Figure 1. There is no wiring between the sounder and base.

Figure 1: Wiring the base

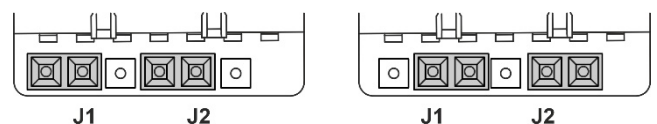


- | | |
|------------------------------|------------------|
| 1. Ext. 24 VDC+ IN/OUT | 7. Shield |
| 4. Ext. 24 VDC ground IN/OUT | 8. Loop - IN/OUT |
| 5. Loop+ IN/OUT | |

Setting the power source

Use jumpers J1 and J2 to set the power source, as shown in Figure 2.

Figure 2: Setting the power source



Loop power

External 24 VDC power

Caution: The external power supply must be EN 54-4 compliant and of sufficient capacity for the installation requirements.

Setting the address

Use DIP switch SW1 (see Figure 3) to set the device address from 1 to 127.

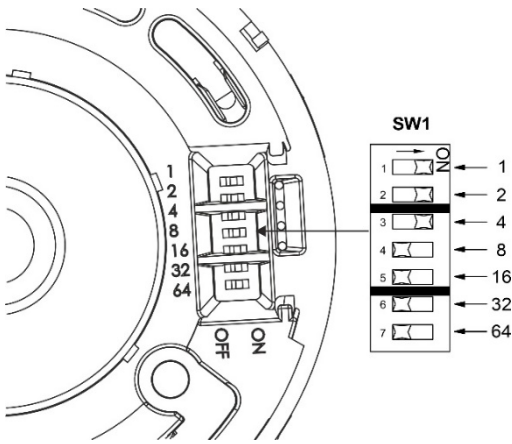
Each switch has a decimal value, as shown below. The device address is the sum of the switch values.

For example, to set device address 007, set switches 1, 2, and 3 to ON and all other switches to OFF.

Note: The switch *values* determine the address, not the switch numbers.

Switch	1	2	3	4	5	6	7
Value	1	2	4	8	16	32	64

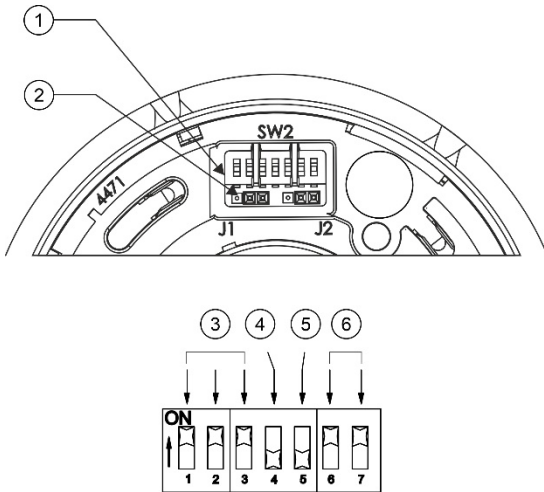
Figure 3: Setting the address



Mode, tone, and volume configuration

Use DIP switch SW2 (see Figure 4) to set the operating mode, tone, and volume.

Figure 4: Mode, tone, and volume configuration



1. DIP switch SW2
2. Power selection jumpers
3. Tone configuration
4. Operating mode configuration
5. Visual indicator mode
6. Volume configuration

Setting the operating mode

Use DIP Switch SW2-4 to configure the operating mode, stand-alone or dedicated.

Table 1: Setting the operating mode (SW2-4)

SW2-4 Setting	Mode
On	The sounder operates as a stand-alone sounder with a unique loop address
Off	The sounder operates as a dedicated sounder with an address matched to the detector address

Setting the visual indicator mode

Use DIP Switch SW2-5 to configure the visual indicator mode, on or off.

Caution: Disabling the visual indicator is not recommended when using the Visual indicator only tone setting (see “Setting the tone” below).

Table 2: Setting the visual indicator mode (SW2-5)

SW2-5 Setting	Mode
On	Enables the visual indicator
Off	Disables the visual indicator

Setting the volume

Use DIP Switches SW2-6 and SW2-7 to set the volume, from level 1 (quietest) to level 4 (loudest).

Table 3: Setting the visual indicator mode (SW2-5)

Level	SW2-6 Setting	SW2-7 Setting	Average dBA
1	Off	Off	3 dBA less than level 2
2	On	Off	3 dBA less than level 3
3	Off	On	3 dBA less than level 4
4	On	On	Certified tones [1]

[1] See Specifications for tones approved to EN 54-3

Setting the tone

Use DIP Switches SW2-1, SW2-2, and SW2-3 to configure the tone. Two tones are available, as shown in Table 4.

Table 4: Setting the tone

Device mode	SW2-1, 2, 3	Primary warning	Secondary evacuation	Attention (nonfire)
ZP755		Intermittent	Continuous	Class change [1]
ZP755		Continuous	Two-tone	Class change
ZP755		Two-tone	Intermittent	Class change
ZP755		Australian whoop	Australian Alert	Class change
ZP755		Swedish tone	Dutch slow whoop	Class change
ZP755		ISO8201	French two-tone	Class change
ZP755		German	Visual indicator only [1]	Class change
ZP754		Intermittent	Continuous	Class change

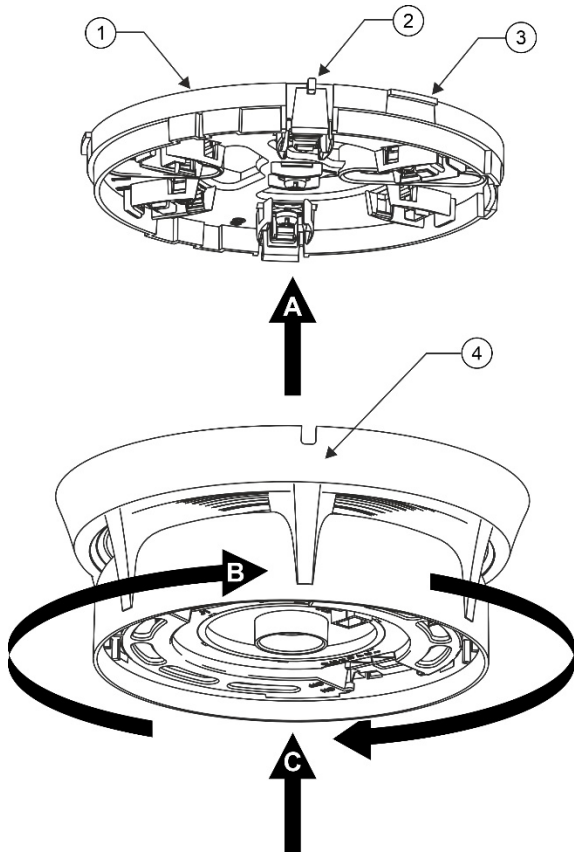
[1] Class change and the Visual indicator only may not be available for legacy control panels. See the configuration options of your control panel to confirm availability.

Mounting the sounder

Align the sounder to the plug-in base. Push up (A), and then turn the sounder until it clicks into place (B). Push the sounder up once more to engage (C). See Figure 5.

Reverse the above procedure to remove the sounder from the base.

Figure 5: Mounting the sounder

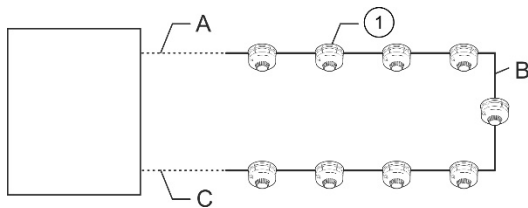


- 1. Plug-in base
- 2. Release/lock catch
- 3. Release aid (3X)
- 4. Addressable sounder

Maximum number of devices per loop

For loop-powered devices, use Figure 6 and Table 4 to determine the maximum number of detectors and sounders that can be connected to the loop.

Figure 6: Maximum number of devices per loop



- A. Cable length panel to first sounder
- B. Cable length first to last sounder
- C. Cable length last sounder to panel
- 1. Detectors and Sounders

Table 5: Maximum number of devices per loop

A	B	C	Quantity allowed [1]
10 m	980 m	10 m	60 detectors and 35 sounders 90 detectors and 30 sounders
100 m	800 m	100 m	50 detectors and 35 sounders 90 detectors and 30 sounders
200 m	600 m	200 m	40 detectors and 35 sounders 90 detectors and 30 sounders
300 m	400 m	300 m	40 detectors and 30 sounders 90 detectors and 25 sounders

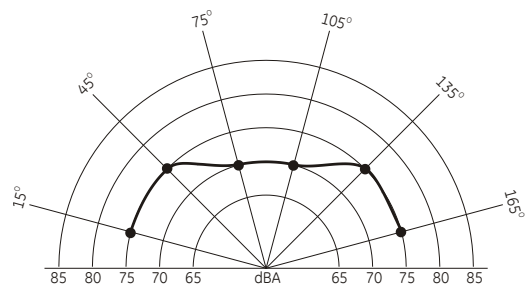
[1] Using a two-core shielded loop of 1000 meters cable size 1.5 mm²

Specifications

Operating voltage	
External power supply	18 to 30 VDC
Loop power	16 to 20.5 V pulsed
Current (loop powered)	
Quiescent (RMS)	0.9 mA
Alarm (peak)	13 mA
Current (externally powered)	
Quiescent (loop RMS)	0.8 mA
Alarm (loop peak)	6.6 mA
Alarm (external RMS)	3.7 mA
Maximum number	35 per 1 km loop (subject to cable size and sounder spacing)
Sound frequency	
Continuous tone [1]	980 Hz
Intermittent tone	980 Hz (0.5 s on/off)
Two-tone warble [1]	980 Hz/670 Hz (0.5 s/0.5 s)
Australian whoop	500 to 980 Hz (4 s)
Australian alert [2]	440 Hz (0.5 s on/off)
Swedish tone	670 Hz (0.3 s/0.5 s)
Dutch slow whoop	500 to 1200 Hz (3.5 s/0.5 s)
ISO8201	980 Hz (0.5 s on/off)
French two-tone	554 Hz/440 Hz (0.5 s on/off)
German	1200 to 500 Hz (1 s)
Class change	1000 Hz/1200 Hz/1500 Hz (4 s)
Sound distribution	Wide
Monitoring	
Operating power level	Tested continuously
Sound output level	Self test facility
Addressing method	DIP switch
Mounting	Surface, with plug-in base
Wiring	Two-core loop, shielded twisted pair
IP rating	IP21C
Material	Moulded thermoplastic
Colour	Polar White (similar to RAL 9003)
Environmental	
Operating temperature	-10 to +60°C
Storage temperature	-20 to +70°C
Relative humidity	10 to 95%, noncondensing
Weight	156 g
Dimensions (Ø × D)	127 × 47 mm

- [1] Certified to EN 54-3
- [2] ISO7731

Figure 7: Anechoic sound levels (at 1 m)

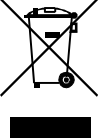


Note: These measurements correspond to the highest volume for the EN 54-3 approved tones.

Regulatory information

This section provides a summary on the declared performance according to the Construction Products Regulation (EU) 305/2011 and Delegated Regulations (EU) 157/2014 and (EU) 574/2014.

For detailed information, see the product Declaration of Performance (available at firesecurityproducts.com).

Conformity	CE
Notified/Approved body	0370
Manufacturer	KGS Safety System (Hebei) Co. Ltd., 80 Changjiang East Road, QETDZ, Qinhuangdao 066004, Hebei, China. Authorized EU manufacturing representative: KGS Fire & Security B.V., Kelvinstraat 7, 6003 DH Weert, Netherlands.
Year of first CE marking	14
Declaration of Performance number	360-5202-0199
Standards	EN 54-3 Type A (Indoor Use)
Product Identification	ZP755BV-4P
Intended use	See the product Declaration of Performance
Declared performance	See the product Declaration of Performance
	2012/19/EU (WEEE Directive): Products marked with this symbol cannot be disposed of as unsorted municipal waste in the European Union. For proper recycling, return this product to your local supplier upon the purchase of equivalent new equipment, or dispose of it at designated collection points. For more information see: recyclethis.info .

Contact information and product documentation

For contact information or to download the latest product documentation, visit firesecurityproducts.com.

Product warnings and disclaimers

These products are intended for sale to and installation by qualified professionals. KGS Fire & Security cannot provide any assurance that any person or entity buying its products, including any “authorized dealer” or “authorized reseller”, is properly trained or experienced to correctly install fire and security related products.

For more information on warranty disclaimers and product safety information, please check <https://firesecurityproducts.com/policy/product-warning/> or scan the QR code:

