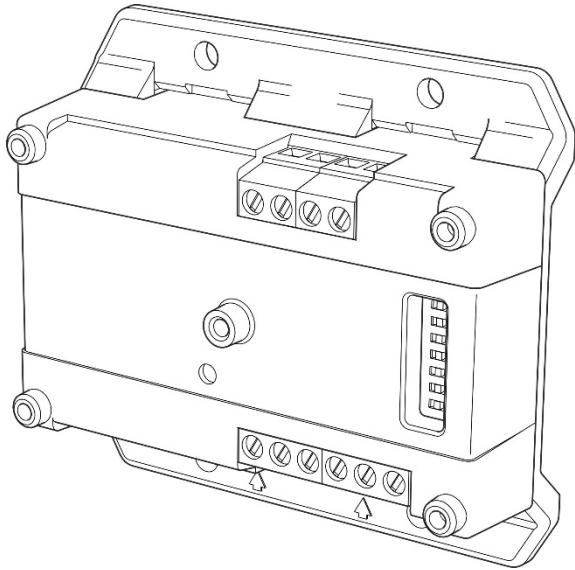


A50E-2 Relay Module Installation Sheet



To install the module:

1. Verify that all field wiring is free of opens, shorts, and ground faults.
2. Make all wiring connections as shown in Figure 1.

Mounting

The module must be mounted inside a compatible electrical box (such as the Ziton SMB-DIN1 or SMB-DIN2).

Mount the protective housing onto the wall using a suitable mounting system for the wall characteristics.

Wiring

Wire the module as shown in Figure 1, below.

Use 14, 16, or 18 AWG wire (0.75, 1.0, or 1.5 mm²). Sizes 16 and 18 AWG are recommended.

Figure 1: Wiring

Description

The A50E-2 Relay Module provides a single relay to control external appliances (door closers, fans, dampers, etc.) or equipment shutdown.

A status LED indicates when the module is activated.

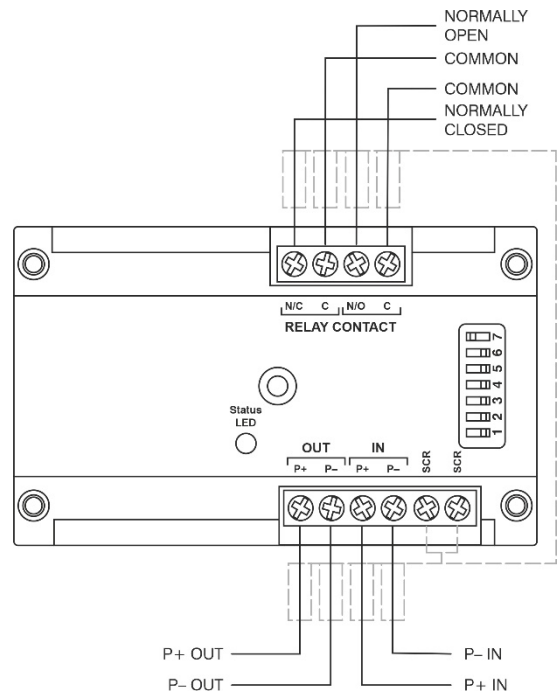
Installation

Notes:

- This module complies with the requirements of EN 54-18. If the module is used in conditions or circumstances that do not comply with those tested for and allowed in EN 54-18, operation may be impaired, and the supplier will not be liable for any injury suffered or damage caused as a result. You must contact our technical support department for advice if the device is to be used in conditions that differ from those prescribed in EN 54-18.
- This module will NOT operate without electrical power. As fires frequently cause power interruption, we suggest you discuss further safeguards with your local fire protection specialist.

WARNING: Electrocution hazard. Dangerous voltages may be present at terminals even when the power is shut off. Take proper precautions to avoid injury or death.

Note: The module is shipped from the factory as an assembled unit; it contains no user-serviceable parts and should NOT be disassembled.



Note: Connect all cable screens to a single point, as shown.

Setting the address

Use the seven-segment DIP switch (see Figure 1) to set the device address from 1 to 127.

Each switch has a decimal value, as shown below. The device address is the sum of the switch values.

For example, to set device address 007, set switches 1, 2, and 3 to ON and all other switches to OFF.

Note: The switch *values* determine the address, not the switch numbers.

Switch	1	2	3	4	5	6	7
Value	1	2	4	8	16	32	64


Specifications

Operating voltage	16 to 20.5 V pulsed
Current consumption	
Standby	600 μ A
Active	850 μ A
Relay contact rating	1 A at 30 VDC or 0.3 A at 40 VAC
Power factor	
Resistive load	1 PF
Inductive load (L/R = 7 mS)	0.4 PF
Activated indication	Flashing red status LED
IP rating	IP20
Application	Indoor use
Operating environment	
Operating temperature	-10 to +55°C
Storage temperature	-10 to +55°C
Relative humidity	20 to 95% noncondensing
Dimensions (W × H × D)	85 × 78 × 28 mm
Weight	40 g

Regulatory information

This section provides a summary on the declared performance according to the Construction Products Regulation (EU) 305/2011 and Delegated Regulations (EU) 157/2014 and (EU) 574/2014.

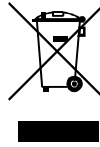
For detailed information, see the product Declaration of Performance (available at firesecurityproducts.com).

Conformity	
Notified/Approved body	0370
Declaration of Performance number	360-5211-0499
Year of first CE marking	09
Product Identification	A50E-2
Intended use	See the product Declaration of Performance
Declared performance	See the product Declaration of Performance

Manufacturer

KGS Safety System (Hebei) Co. Ltd.,
80 Changjiang East Road, QETDZ,
Qinhuangdao 066004, Hebei, China.

Authorized EU manufacturing
representative:
KGS Fire & Security B.V.,
Kelvinstraat 7, 6003 DH Weert,
Netherlands.



2012/19/EU (WEEE Directive):
Products marked with this symbol
cannot be disposed of as unsorted
municipal waste in the European Union.
For proper recycling, return this product
to your local supplier upon the purchase
of equivalent new equipment, or
dispose of it at designated collection
points. For more information see:
recyclethis.info.

Contact information and product documentation

For contact information or to download the latest product documentation, visit firesecurityproducts.com.

Product warnings and disclaimers

These products are intended for sale to and installation by qualified professionals. KGS Fire & Security cannot provide any assurance that any person or entity buying its products, including any “authorized dealer” or “authorized reseller”, is properly trained or experienced to correctly install fire and security related products.

For more information on warranty disclaimers and product safety information, please check <https://firesecurityproducts.com/policy/product-warning/> or scan the QR code:

